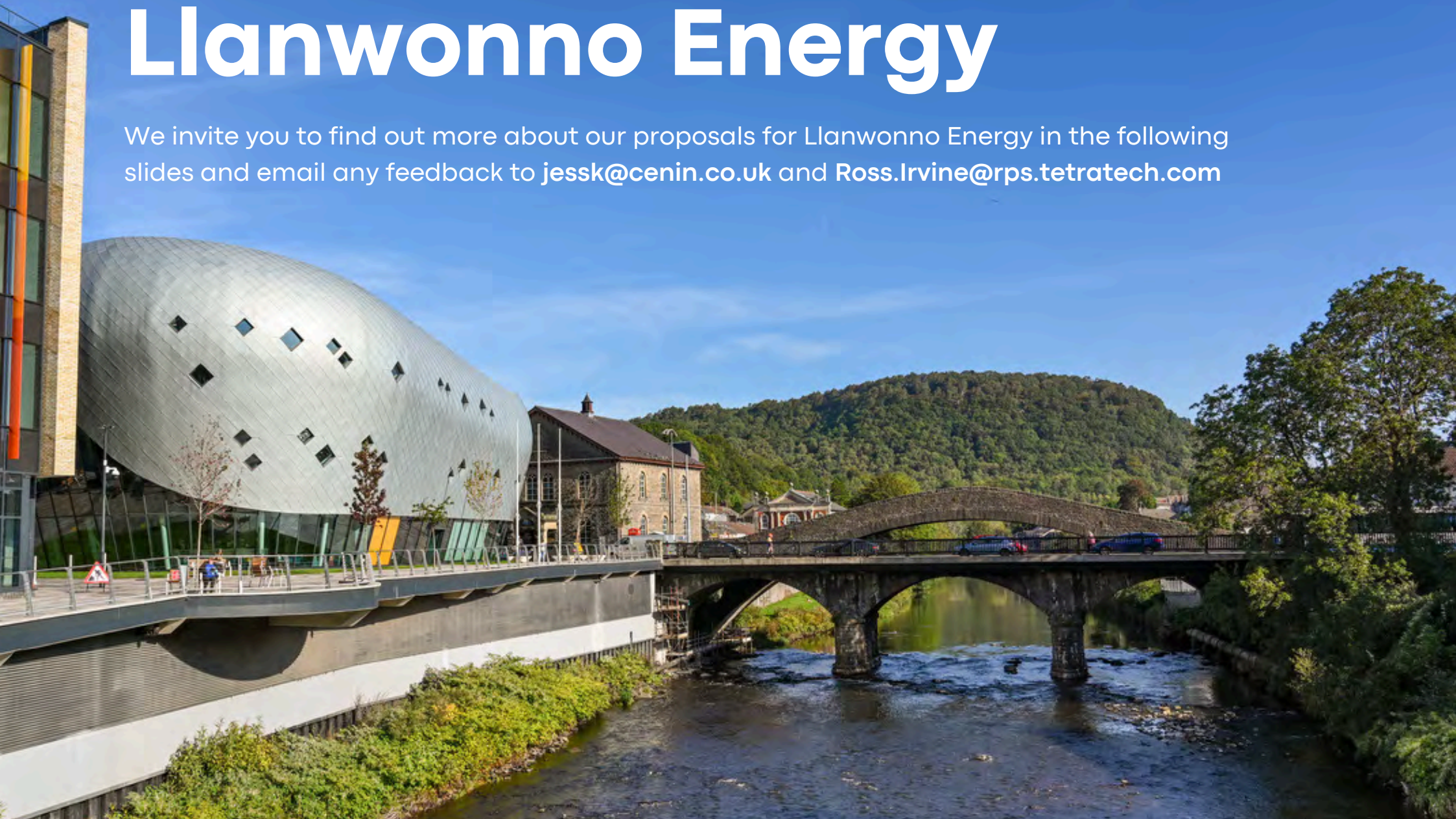


Llanwonno Energy

We invite you to find out more about our proposals for Llanwonno Energy in the following slides and email any feedback to jessk@cenin.co.uk and Ross.Irvine@rps.tetrattech.com





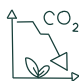

2. Overview

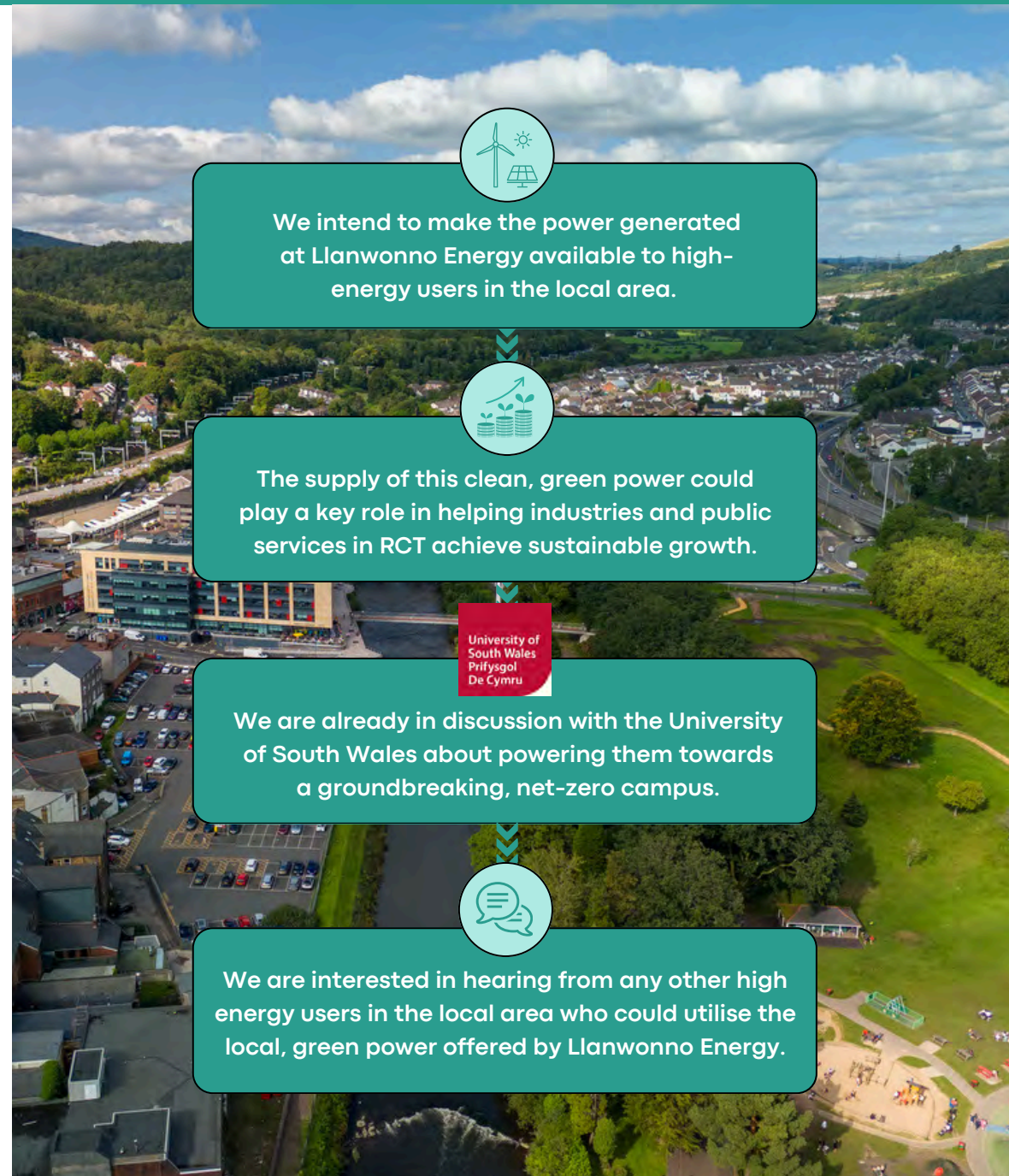
Llanwonno Energy is an innovative scheme that would intertwine the generation of wind and solar power to bring a wide range of benefits to the local area.

As we face the significant challenges of energy security and climate change, innovative projects like this are essential if we are to transition to a greener, cleaner future. They provide crucial economic and environmental benefits and will help Rhondda Cynon Taf (RCT) meet its goal of becoming a net carbon-neutral authority by 2030.

Further information about our plans will be shared over the coming months and we would welcome input from the local community in shaping these proposals. You can find details of how to contact us on the back of this booklet.

The development of Llanwonno Energy would:

-  Reduce the amount we pay for our energy over the longer term
-  Increase energy security and resilience by ending our reliance on imported coal and gas
-  Reduce carbon emissions that will help RCT and Wales reach their net zero ambitions
-  Address energy shortfalls as we transition to an electric powered transport system



We intend to make the power generated at Llanwonno Energy available to high-energy users in the local area.



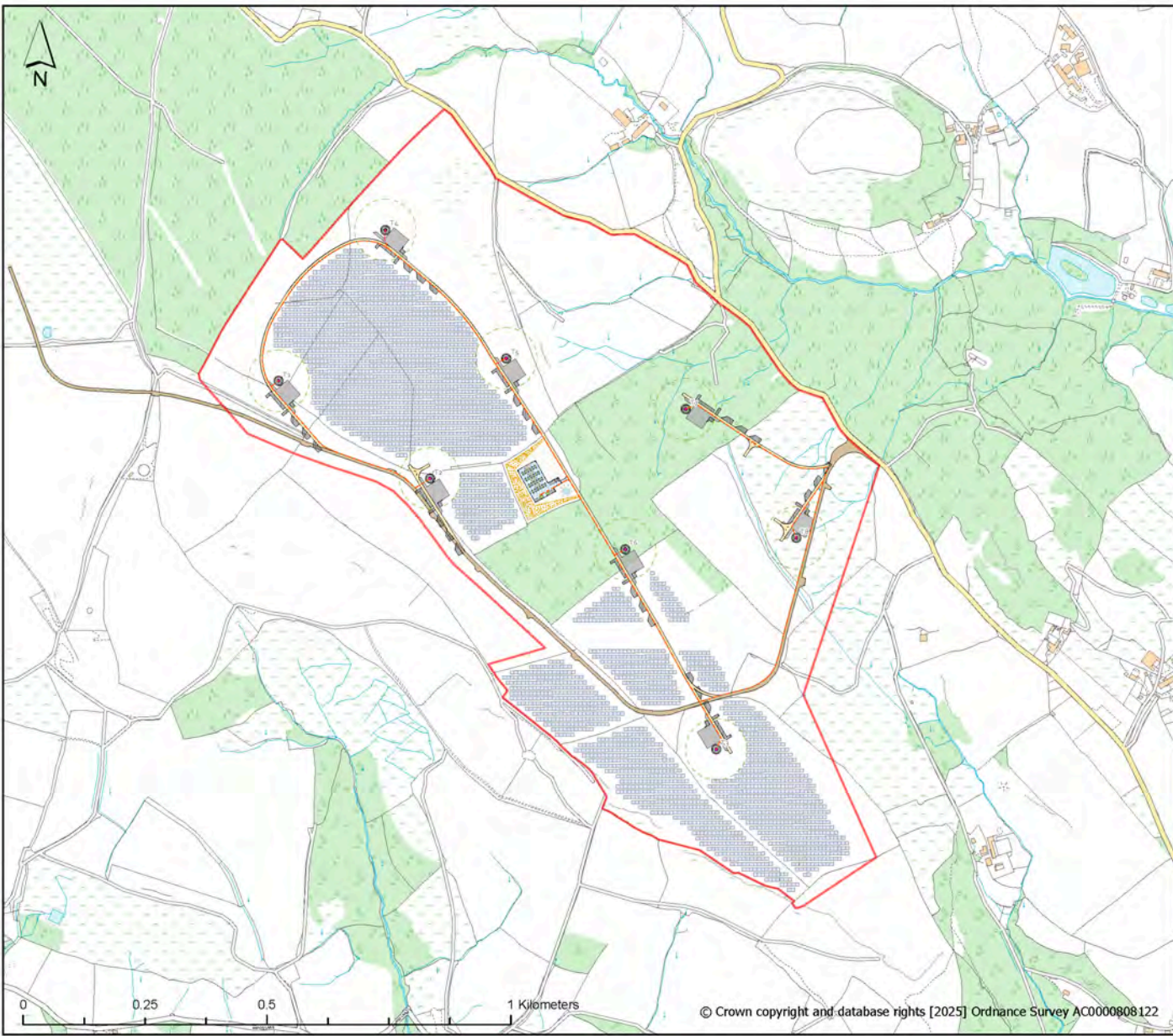
The supply of this clean, green power could play a key role in helping industries and public services in RCT achieve sustainable growth.



We are already in discussion with the University of South Wales about powering them towards a groundbreaking, net-zero campus.



We are interested in hearing from any other high energy users in the local area who could utilise the local, green power offered by Llanwonno Energy.



Llanwonno Energy Project

Site Layout Plan

Scale 1:7500
Date: 13/03/25
Drwg: L05-2b

- Site boundary
- Turbine locations
- Temporary hardstanding areas
- Permanent hardstandings
- Turbine blade oversail (126m diameter)
- New access track
- Existing track
- Solar arrays
- Construction compound (to be built over when wind farm completed)
- Battery storage (For details see BESS and substation plan)
- Cable trenches
- ArcGIS
- CutSlope

Drawing revisions
13/03/25 Battery BESS updated with 20ft battery containers and 40ft AC units. GRP substation enclosures and compound redesigned. 25% slope added. Footprint centred in field. Drainage management added.
13/03/25 Cable trench layer added.

Client

4. Ecology Management Plan

In addition to tackling the climate emergency, we also place great importance on addressing the nature crisis through our proposals. Working with a team of experts to formulate our plans, we are proposing the following actions to protect and enhance the area's biodiversity:



Woodland Management in the private wood, felling non-native species, thinning and planting of understorey species, overseeding with a woodland ground flora seed mix.



Habitat creation with piles of dead wood from materials within the woodland, which would provide habitat for invertebrates and reptiles.



Stop regular cutting and create more habitat to enhance the marshy grassland.



Control encroaching bracken and scrub within semi-improved acid marshy grassland and dry dwarf shrub heath areas.



Fencing in the solar panels to prevent overgrazing and allow the development of a longer and more diverse sward. This habitat will be cut annually in late summer / early autumn.



Habitat enhancement for reptiles, creation of hibernacula's and grass snake egg-laying heaps.



Bird, bat and dormouse boxes (10-15 of each in the private wood).



Remove / reduce the invasive Japanese Knotweed present on site.



Creation of Lapwing Management Areas, in addition to those already created.



These visualisations are indicative and show how the proposed wind farm could look from a number of key vantage points in the area.



Lane leading from Ynysybwl to proposed site



Ynysybwl Rugby Club



Heol y Plwyf, Ynysybwl



Lady Windsor Cycle Route, Ynysybwl

6. Visualisations 2

These visualisations are indicative and show how the proposed wind farm could look from a number of key vantage points in the area.



Coed y Cwm, Pontypridd



A470 Sainsbury's Roundabout



A4233 near Ynyshir



Lidl Store, Pontypridd

These visualisations are indicative and show how the proposed wind farm could look from a number of key vantage points in the area.



Access track leading to proposed site



Rheolau Terrace, Trehafod



Llwyncelyn Road bridge (near the industrial estate)



Avondale Road, Pentre

8. Visualisations 4

These visualisations are indicative and show how the proposed wind farm could look from a number of key vantage points in the area.



Waun Wen Community Centre



A4058 Roundabout, Porth



Pleasant Heights, Porth



Cattle grid on Graigwen Road

Central to all of the projects we undertake is a commitment to ensuring we provide wide-ranging, long-term benefits to the communities in which we operate, in addition to the green power our plans would provide.

To date, we've been delighted to provide support for a number of local individuals and organisations, detailed below, but should our proposals gain approval, we look forward to working with the local community to greatly increase the support and assistance we are able to provide throughout the area.

If you're an organisation, club or individual based in the Llanwonno area and would welcome such support, please contact us via info@cenin.co.uk

-  **World of Words**
-  **Ynyshir Brass Band**
-  **Ynyshir Football Club**
-  **Porth Harlequins**

-  **Pendyrus Male Choir**
-  **Tylorstown RFC**
-  **Woodpeckers' Men Shed**
-  **Porth AFC**



"The support you've already provided has been invaluable, not only in enabling us to supply playing kits for the teams but also in allowing us to undertake numerous other important initiatives. This includes meeting the needs of our younger teams and providing hot meals to the children during training sessions and games, both outside of school hours and during school holidays. In some cases, this is the only meal or sports kit these children receive." - Tylorstown RFC



We believe helping future generations understand the need for changes in the way we live is essential.

As part of our commitment to help understand this need, we've offered all Year 6 pupils from schools within 5km of Llanwonno Energy a free educational visit to our Parc Stormy base, as well as covering the cost of their transport.

So far, we've been delighted to welcome pupils from:

- Cwmlai Primary School
- Ysgol Nantgwyn Primary
- Alaw Primary
- Hendreforgan Primary
- Tref-Y-Rhyg Primary
- Pontygwaith Primary
- Hafod Primary School
- YGG Llwyncelyn

All visits consist of a classroom-based lesson from one of our sustainability experts and the chance to:



Go inside our sustainable eco house designed by Cardiff University



Learn how the food waste you put out each week turns into renewable electricity



Stand underneath a 100m+ tall operational wind turbine



Walk through our 2,940 solar panels



Look inside our state-of-the-art minerals research lab

Please contact visitus@cenin.co.uk if you would like to arrange a visit.



Throughout the planning process, we have always welcomed open dialogue with the local community, to ensure our plans have been properly consulted on.

This timeline details all the engagement we've undertaken in relation to the project so far, including our ongoing digital survey, details of which can be found opposite.

Early March 2025 - 17,000 brochures delivered around the local area

Late March 2025 - 17,000 PAC information leaflets delivered around the local area

PAC Drop in Sessions to be held:

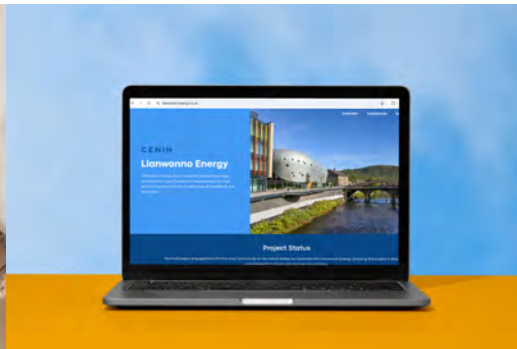
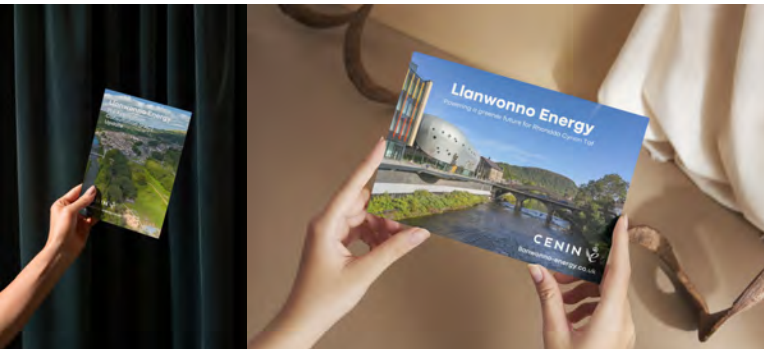
Pantygraigwen Community Centre - 1st April 2025 - 5-7pm

Ynysybwl Community Centre - 7th April 2025 - 5-7pm

Waun Wen Community Centre - 10th April 2025 - 5-7pm

Tell us what you think

Scan the QR code below or follow the link on our project website (llanwonno-energy.co.uk) to tell us your views about renewable energy in Wales.



We are a Bridgend-based, family-owned company that believes in creating a cleaner, more sustainable future for generations to come.

Through our innovative approach to building integrated renewable energy systems, we unlock potential to provide more value to local communities.

In 2021, our work in sustainable development was recognised with the Queen’s Award for Enterprise.

We’re incredibly passionate about the benefits this project can bring to the local area and hope you’ll support our ambition to leave the Wales we want for future generations.

Find out more about us at cenin.co.uk

Our Project Team



Martyn Popham
Director & Project Lead



Neil Tapper
Director - Engineering



Katherine Day
Financial Controller



Jess King
Projects Manager



Planning Partner
rpsgroup.com



Reuben Hamon
Project Designer



Paul Kelliher
Legal Contracts & Administration Manager



Clare Brown
Agriculture and Learning Coordinator



Land Agents
hrt.uk.com



Communications Partner
avenue.wales

Members of the CENIN team receiving the Queen’s Award at our Parc Stormy HQ

